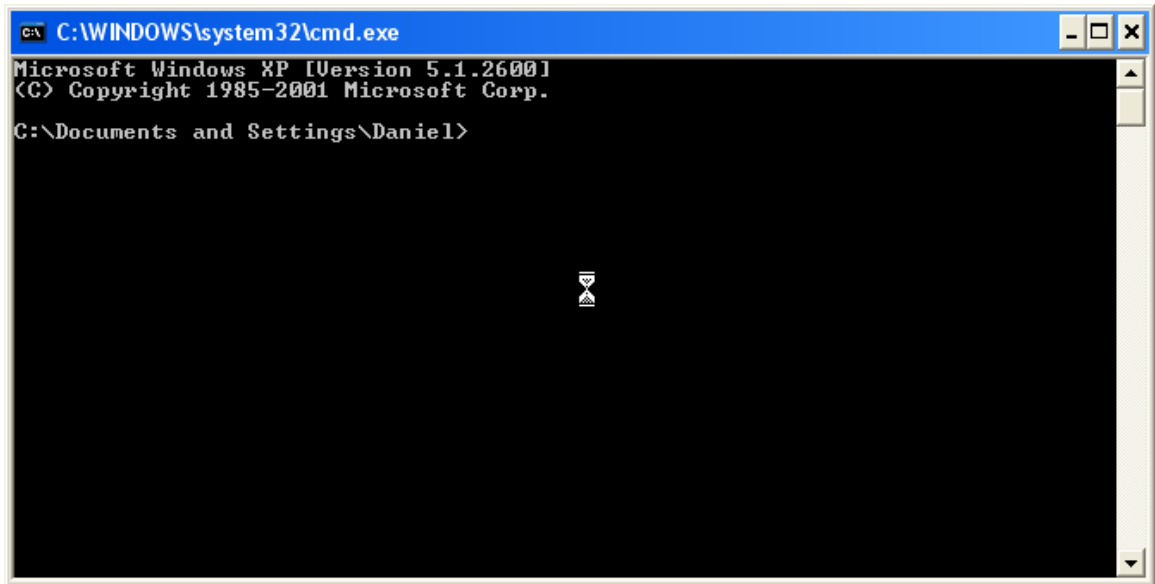


Please follow the following steps:

1. To open a command prompt, click **Start**, click **Run**, **Type cmd** and then click **OK**.

You will see a screen like the following.

A screenshot of a Windows XP command prompt window. The title bar is blue and contains the text "C:\WINDOWS\system32\cmd.exe" along with standard window control buttons (minimize, maximize, close). The main area is black with white text. The text displayed is: "Microsoft Windows XP [Version 5.1.2600] (C) Copyright 1985-2001 Microsoft Corp. C:\Documents and Settings\Daniel>". A small hourglass icon is visible in the center of the window, indicating a delay or loading process.

```
C:\WINDOWS\system32\cmd.exe
Microsoft Windows XP [Version 5.1.2600]
(C) Copyright 1985-2001 Microsoft Corp.
C:\Documents and Settings\Daniel>
```

Type **ipconfig /all** and then hit enter

You will see the following values, these are from my computer, yours may be different, does are related to your router settings.

```

C:\ Select C:\WINDOWS\system32\cmd.exe
Microsoft Windows XP [Version 5.1.2600]
(C) Copyright 1985-2001 Microsoft Corp.

C:\Documents and Settings\Daniel>ipconfig /all

Windows IP Configuration

    Host Name . . . . . : daniel-comp
    Primary Dns Suffix . . . . . :
    Node Type . . . . . : Unknown
    IP Routing Enabled. . . . . : No
    WINS Proxy Enabled. . . . . : No
    DNS Suffix Search List. . . . . : hsd1.fl.comcast.net.

Ethernet adapter Wireless Network Connection 3:

    Connection-specific DNS Suffix . : hsd1.fl.comcast.net.
    Description . . . . . : IEEE 802.11g Wireless Cardbus/PCI Ad
apter
    Physical Address. . . . . : 00-40-F4-DA-1A-AE
    Dhcp Enabled. . . . . : Yes
    Autoconfiguration Enabled . . . . : Yes
    IP Address. . . . . : 192.168.10.101
    Subnet Mask . . . . . : 255.255.255.0
    Default Gateway . . . . . : 192.168.10.1
    DHCP Server . . . . . : 192.168.10.1
    DNS Servers . . . . . : 68.87.74.162
    : 68.87.68.162
    Lease Obtained. . . . . : Wednesday, March 21, 2007 9:23:24 PM
    Lease Expires . . . . . : Thursday, March 22, 2007 9:23:24 PM

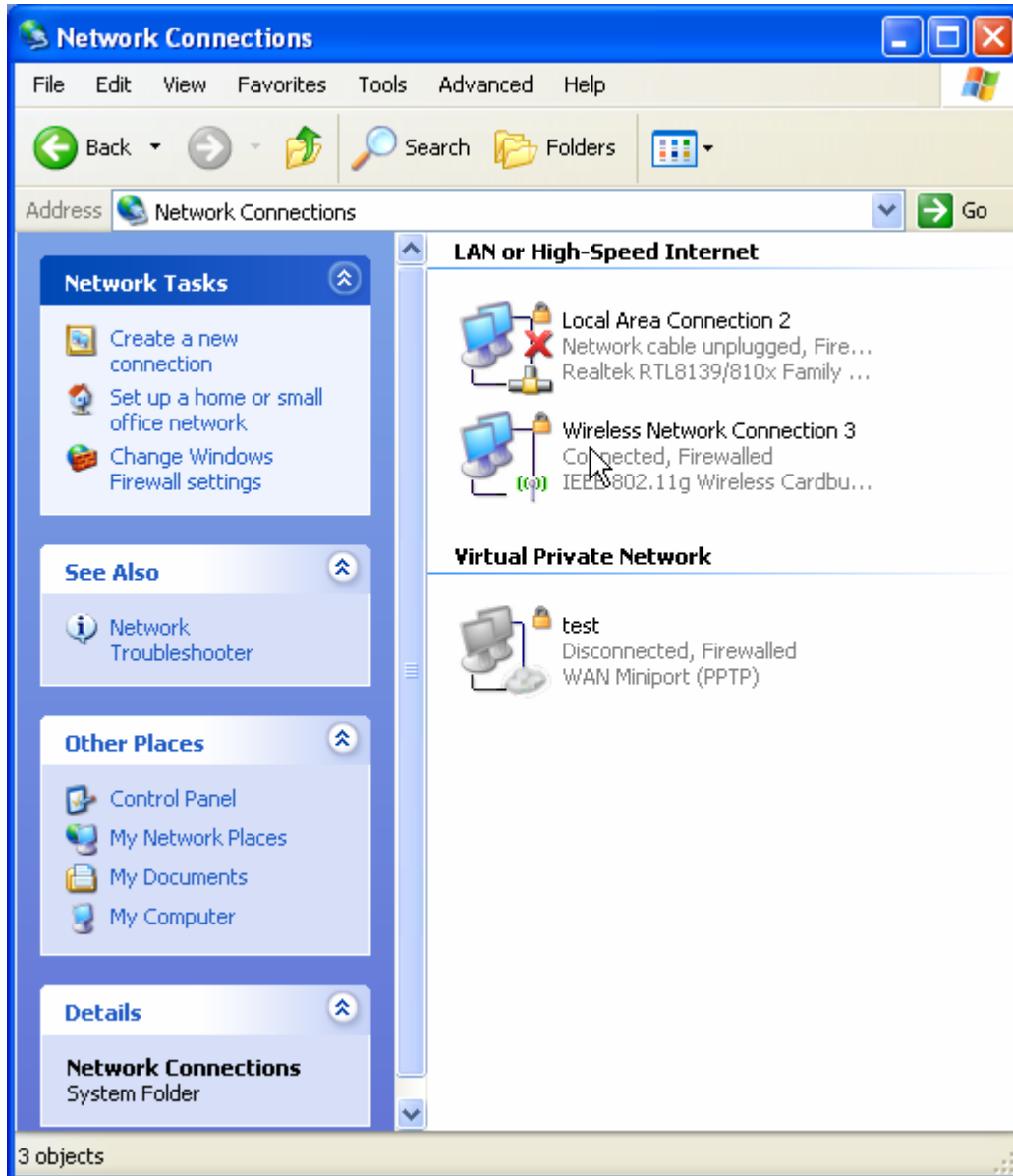
Ethernet adapter Local Area Connection 2:

    Media State . . . . . : Media disconnected
    Description . . . . . : Realtek RTL8139/810x Family Fast Eth
ernet NIC
    Physical Address. . . . . : 00-11-D8-45-0F-57

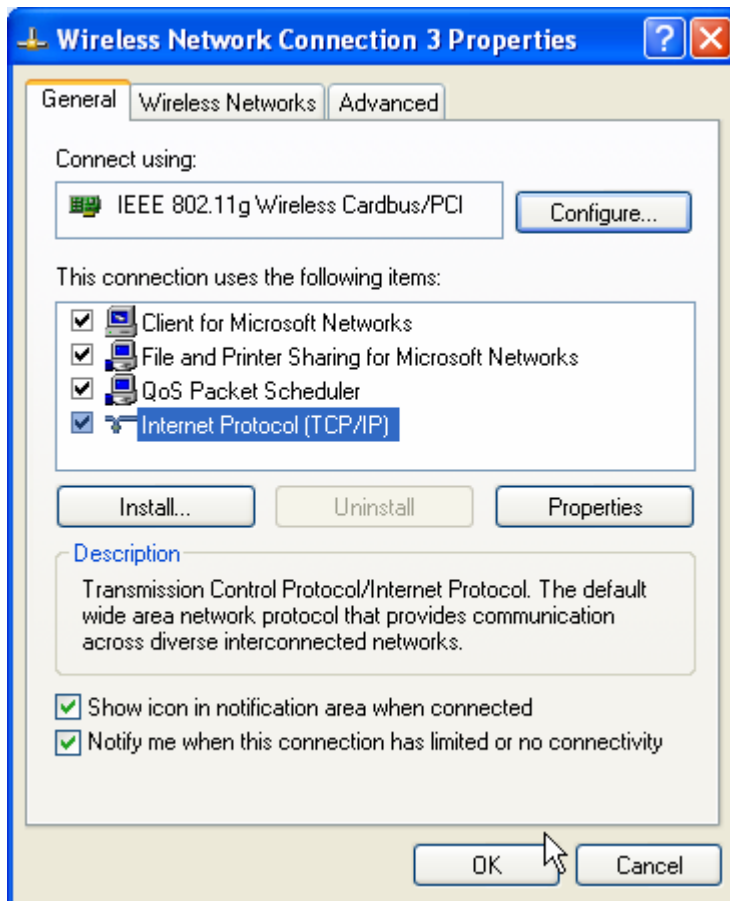
```

2. To open Network Connections, click **Start**, click **Control Panel**, click **Network and Internet Connection** and then click **Network Connections**.

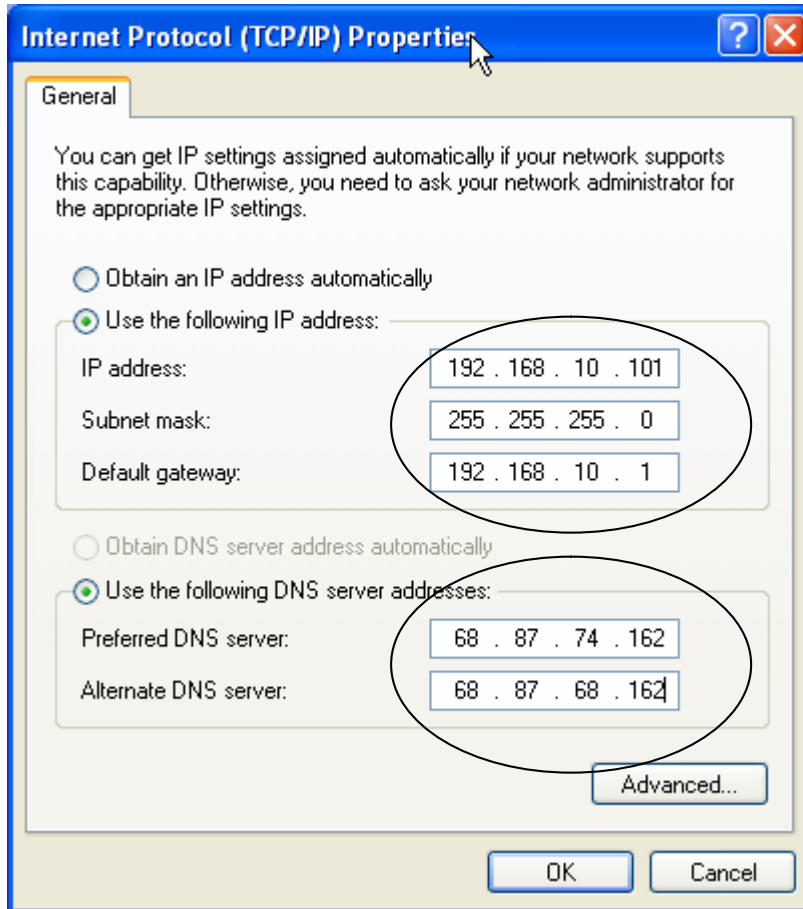
You will see the following screen



Now choose your network connection. If your computer is connected with a wire to the router you must choose Local Area Connection, but if it is wireless connection then chose Wireless Network Connection.
After you highlight your connection do a RIGHT CLICK and select Properties at the end of the list. You 'll see the following screen.



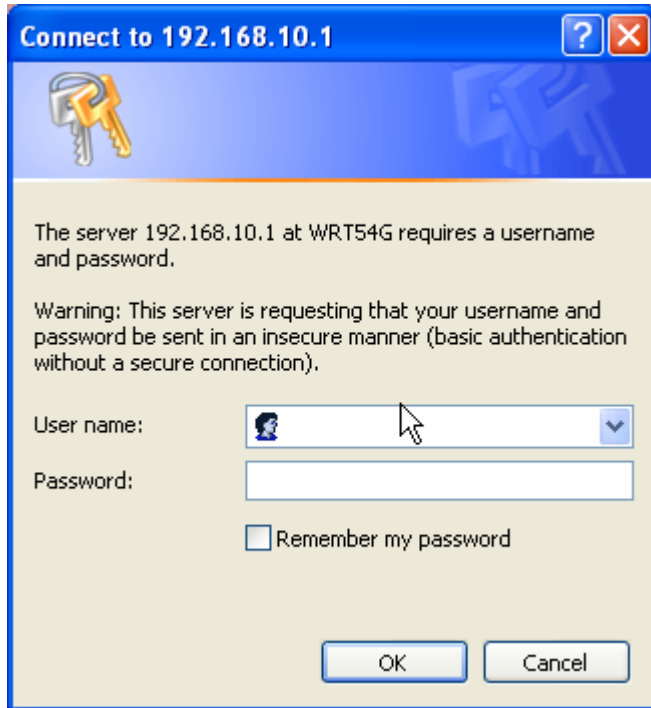
Now highlight Internet Protocol (TCP/IP) and click Properties



Now input the values that you obtain from your computer at the beginning, and click OK and close all the previous screens until you get back to your desktop..

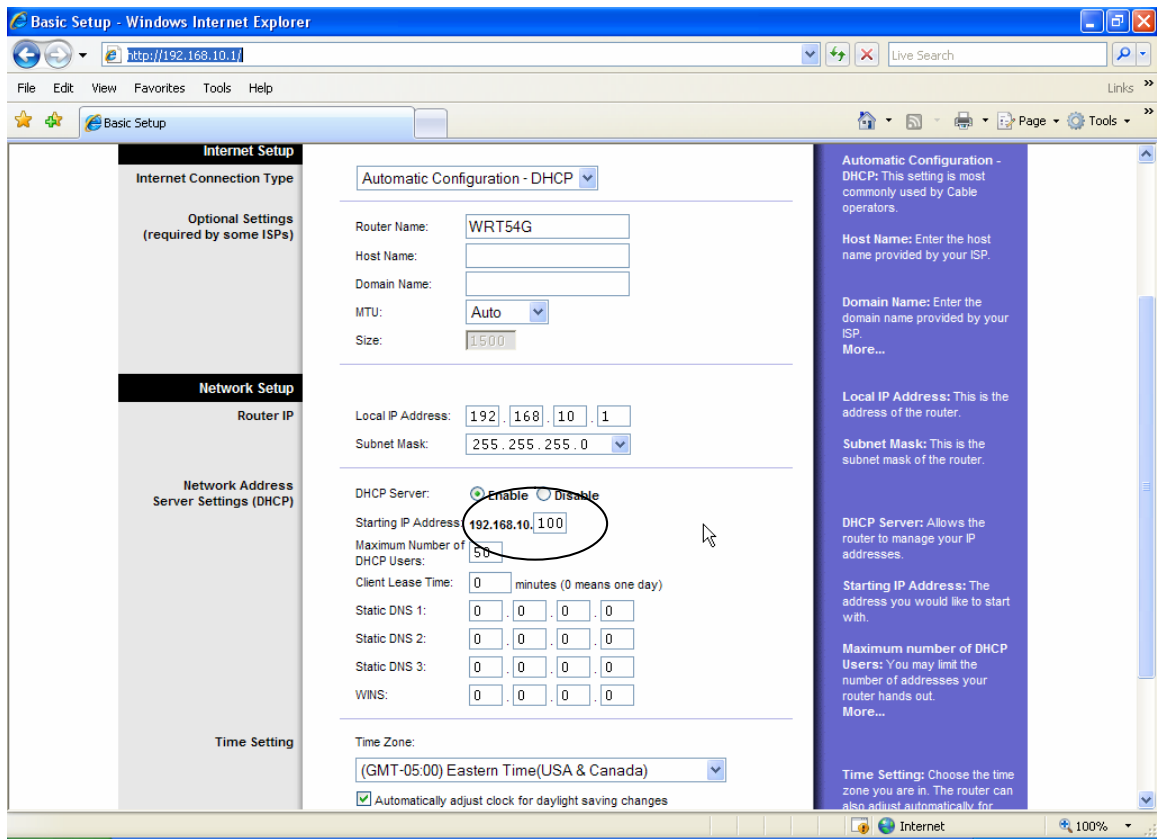
So far you have setup your computer with a private static IP address.

OK now open the Internet Explorer and type in the address bar the Ip address that you get for your default Gateway. (By default Linksys is 192.168.1.1)
And click go , you will get a screen like this.

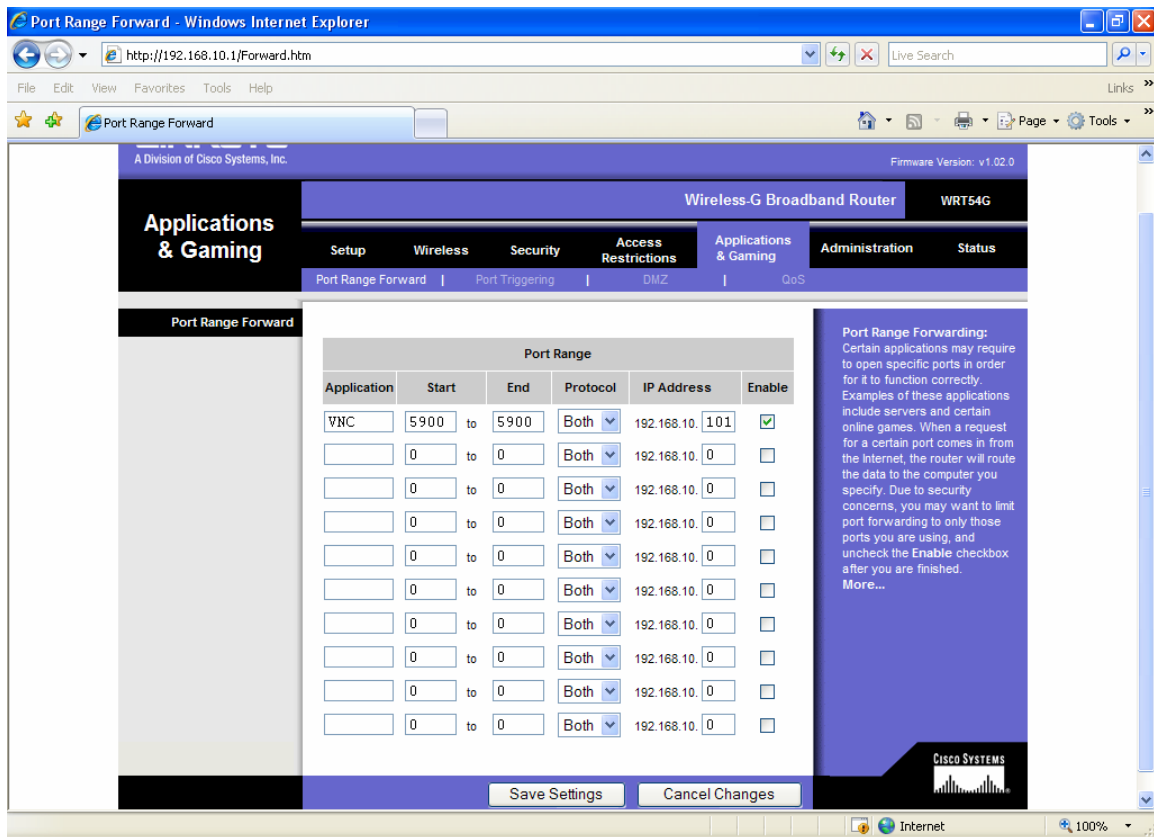


The default user name and password if you did not change this is admin, type it in and click OK

To ensure that your private static ip address is not conflicting with any of the other computers or devices in your network, make sure that you increase the starting number for your DHCP in 5 or 10 numbers. So in this example I'll probably setup de last octal at 110.



Now you can setup the port forwarding as follow



Click on Applications & Gaming to get the screen for port Random Forward.
 Input the name of your application and ports setting as follow

VNC 5900 5900 192.168.10.101 enable

Make sure you type your private static IP address, the one that we define before.
 Click Save Settings wait for the confirmation prompt and close the internet explorer.

Now you are ready to connect from any where to your computer.

The only thing that you need to know is your PUBLIC IP address, this is the one that is assigned to you from your Internet Provider.

You can type in your internet explorer www.ipchicken.com and you will get the current IP assigned.

For does that do not have a static public IP Address, can implement the use of a Dynamic DNS service, basically what it does is get your current ip address form your computer and storage it an a place where you can retrieve it back.

There are several services out there some free some you pay for the service.

I use two services in particular, one free (www.dyndns.com) for non commercial use, they give you up to 5 different services for free. The second one is www.easydns.com ; this one is for commercial use.

Well I hope I cover all the points suggested for Michal and Leon Berkers

This document was created with Win2PDF available at <http://www.win2pdf.com>.
The unregistered version of Win2PDF is for evaluation or non-commercial use only.
This page will not be added after purchasing Win2PDF.